

*Oriental Aromatics*

**AROMA  
CHEMICALS**

Compendium 2023

# INDEX

---

PRODUCT NAME	CAS NUMBER	PAGE
ALLYL CAPROATE AB15012	123-68-2	01
ALLYL HEPTOATE AB15013	142-19-8	03
AMBERTAL K AB18004	154171-77-4, 154171-76-3	05
ASTROMERAN AB08066	33704-61-9	07
ASTRONE AB08074	81786-73-4	09
CAMBRETTOLIDE AB15137	28645-51-4	11
CAMPHOR DAB 6 AB20001	76-22-2	13
CAMPHOR DAB 8 AB20002	76-22-2	15
CAMPHOR GF/BQ AB08002	76-22-2	17
CAMPHOR PHARMA (USP/BP/EP/JP) AB08005	76-22-2	19
CAPINONE AB08028	3338-56-5	21
CAPOLENE AB08041	—	23
CAPTAITE AB15142	80657-64-3	25
CHAMOMILE ISO BUTYRATE AB18011	80118-06-5	27
CHANDANOL AB22003	28219-61-6	29
CHANDANOL LEAVO AB22004	28219-61-6	31
DIPENTENE AB08043	138-86-3	33
DURGANOL AB18018	67801-20-1	35
FRESCAMENTH AB19008	14765-30-1	37
FRESCONE AB20009	85351-07-1	39
HERBACYCLOHEXANE AB18010	67583-77-1	41
ISOBORNEOL POWDER AB08011	124-76-5	43
ISOBORNYL ACETATE AB08031	125-12-2	45
KETONE 101 AB08032	29461-13-0	47
LIMEOX AB18003	73018-51-6	49



# INDEX

---

PRODUCT NAME	CAS NUMBER	PAGE
LIMOFINE PPL AB15004	147060-73-9	51
LIMOFINE STW AB15002	90480-35-6	53
MYSORNOL AB18019	28219-60-5	55
NECTANONE AB18013	95962-14-4	57
NEROLIN BROMELIA AB15112	93-18-5	59
PINE OIL AB08012	8002-09-3	61
ROSE NITRILE AB15143	10461-98-0	63
RHUBORAN AB20019	82461-14-1	65
SAFRANAL AB15139	116-26-7	67
SAJAGONATE AB18001	68966-86-9	69
SANDALICA AB08104	3407-42-9	71
SEALONE AB18006	28940-11-6	73
SHAKTINOL AB18017	107898-54-4	75
SHIVANOL AB18016	198404-98-7	77
TERPENEOL AB08019	98-55-5	79
TERPINYL ACETATE AB08033	80-26-2	81

## NEW PRODUCT LAUNCHES FOR 2023

---

AMBER COEUR AB18009	139504-68-0	83
AMBROZANE AB22005	6790-58-5	85
AMBERIDE AB21024	211299-54-6	87
EVERMOSS AB20018	4707-47-5	89



**ALLYL  
CAPROATE AB15012**

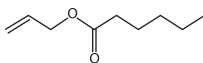
CAS # 123-68-2

---

PINEAPPLE LIKE ODOUR

# ALLYL CAPROATE AB15012

CAS#123-68-2



prop-2-enyl hexanoate

## ODOUR FAMILY



Fruity



## TENACITY

Lasts for < 1 hour(s)  
@ 100.00 % on a  
smelling strip

*Juicy and fruity, Allyl Caproate AB15012 emanates a sweet pineapple-like scent that is easy to mix and match and a delight to use in an array of products*

## PHYSICO-CHEMICAL PROPERTIES

Molecular Weight g/mol	<b>156.225</b>
Refractive Index at 25 °C	<b>1.42 - 1.424</b>
Specific Gravity at 25 °C	<b>0.884 - 0.890</b>
Appearance	<b>Colorless to pale yellow clear liquid</b>
Log P (Measured) at 20 °C	<b>3.191 °C</b>
Flash Point °C (closed cup)	<b>63 °C</b>
Vapour Pressure mmHG at 25.00 °C (est)	<b>0.678000 °C</b>
Boiling Point °C	<b>185.00 °C</b>

## SENSORY DESCRIPTION

Pineapple like Odour

## PERFUMERY USAGE

A sweet and fruity aroma ingredient packed with a juicy pineapple punch, the fragrance in Allyl Caproate AB15012 will make your mindwander to a garden laden with sumptuous and vibrant fruits



**ALLYL  
HEPTOATE AB15013**

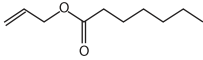
CAS#142-19-8

---

SWEET, FRUITY, BANANA  
LIKE ODOUR

# ALLYL HEPTOATE AB15013

CAS#142-19-8



prop-2-enyl heptanoate

## ODOUR FAMILY



Fruity



## TENACITY

Lasts for 4 hour(s)  
@ 100.00 % on a  
smelling strip

*The fresh fragrance of banana in Allyl Heptoate AB15013 makes for a delicious aroma ingredient, perfect for a range of uses as its charm lies in its subtle yet nostalgic fragrance*

### PHYSICO-CHEMICAL PROPERTIES

Molecular Weight g/mol	<b>170.252</b>
Refractive Index at 25 °C	<b>1.422 - 1.4275</b>
Specific Gravity at 25 °C	<b>0.865 - 0.9</b>
Appearance	<b>Colourless Liquid</b>
Log P (Measured) at 20 °C	<b>3.97 °C</b>
Flash Point °C (closed cup)	<b>79 °C</b>
Vapour Pressure mmHG at 25.00 °C (est)	<b>0.160000 °C</b>
Boiling Point °C	<b>210.00 - 212.00 °C</b>

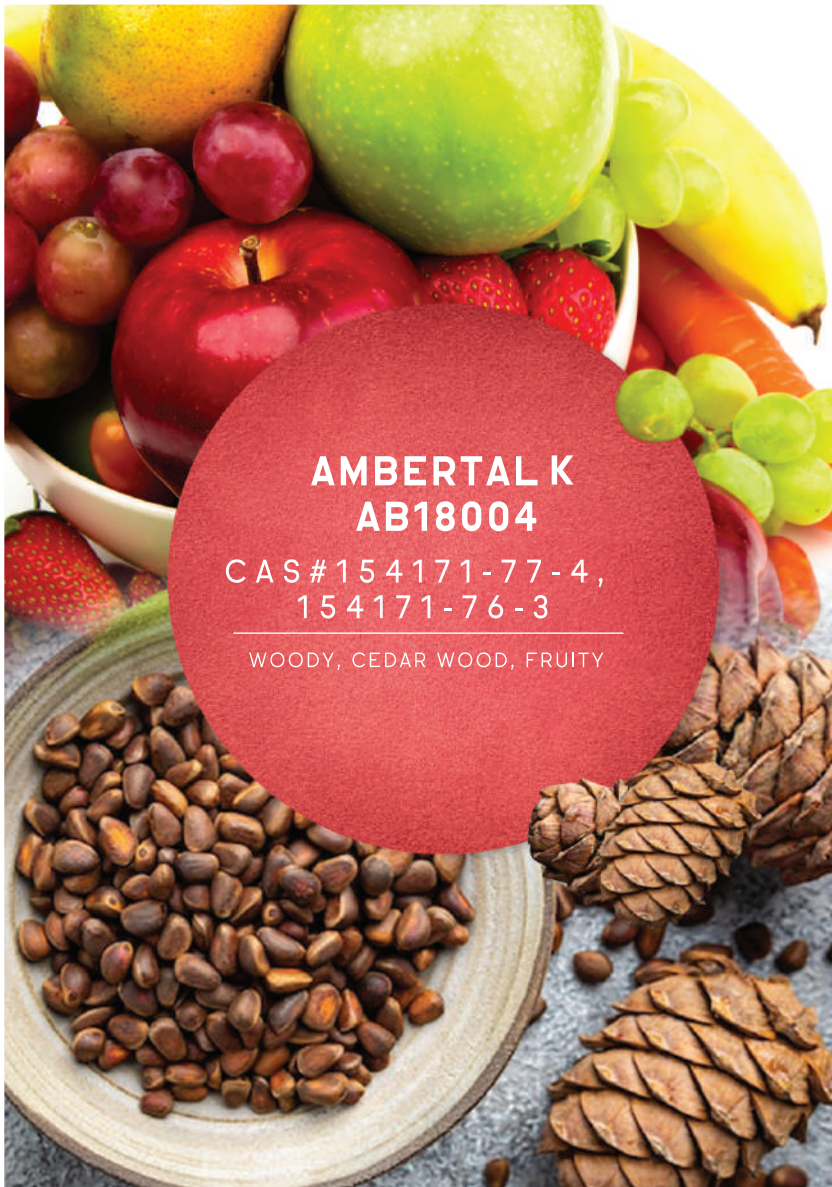
### SENSORY DESCRIPTION

Sweet, Fruity, Banana like  
Odour

### PERFUMERY USAGE

The fruity fragrance of Allyl Heptoate AB15013 brings delish bananas to life in all their succulent glory





**AMBERTAL K  
AB18004**

CAS# 154171-77-4,  
154171-76-3

---

WOODY, CEDAR WOOD, FRUITY

# AMBERTAL K AB18004

CAS#154171-77-4, 154171-76-3



hexahydro-1',1',5',5'-  
tetramethyl-spiro  
(1,3-dioxolane-2,8'(5'H)-  
(2H-2,4a)methanonaphthalene)

## ODOUR FAMILY



Amber



## TENACITY

Lasts for 16 days

*A powerful fragrance, Ambertal K AB18004, conjures up a sensational aroma of woodlands and sweet, earthy and ambery notes in a striking combination*

### PHYSICO-CHEMICAL PROPERTIES

Molecular Weight g/mol	<b>264.40</b>
Refractive Index at 25 °C	<b>1.495-1.507</b>
Specific Gravity at 25 °C	<b>1.040 - 1.050</b>
Appearance	<b>Colorless to pale yellow liquid</b>
Log P (Measured)	<b>3.5 °C</b>
Flash Point °C	<b>&gt;93.33 °C</b>
Vapour Pressure mmHG at 20.00 °C	<b>0.012000 °C</b>
Boiling Point °C	-

### SENSORY DESCRIPTION

Woody, Cedar Wood, Fruity

### PERFUMERY USAGE

The intense scent of Ambertal K AB18004 captures the warmth of wood and the honey-like quality of amber with a hint of rich fruits in a sweetly fragrant concoction you will cherish for life



**ASTROMERAN**  
**AB08066**

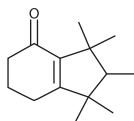
CAS #33704-61-9

---

DIFFUSIVE, SPICY, ANIMALIC ODOUR  
WITH STRONG FLORAL REINFORCEMENT.  
POWDERY, VELVET NUANCE.  
LONG LASTING. AROMATIC, APPLE,  
EARTHY, AMBER WOODY,  
RED FRUIT, PINE

# ASTROMERAN AB08066

CAS #33704-61-9



1,2,3,5,6,7-hexahydro-1,1,2,3,3-pentamethyl-4H-inden-4-one

## ODOUR FAMILY



Woody Musky



## TENACITY

Lasts on blotter  
for 2 days

*Who would have thought that the contrasting notes of musk and wood would enhance each other in such magnificence as they do in Astromeran AB08066!*

## PHYSICO-CHEMICAL PROPERTIES

Molecular Weight g/mol	<b>206.32</b>
Refractive Index at 20 °C	<b>1.4948 - 1.5018</b>
Specific Gravity at 20 °C	<b>0.9503 - 0.9603</b>
Appearance	<b>Colorless to pale yellow semi solid to solid</b>
Log P (Measured) at 20 °C	<b>4.5 °C</b>
Flash Point °C	<b>93.89 °C</b>
Vapour Pressure mmHG at 25.00 °C	<b>0.003000 °C</b>
Boiling Point °C	<b>285.00 - 286.00 °C</b>

## SENSORY DESCRIPTION

Diffusive, spicy, animalic Odour with strong floral reinforcement. Powdery, velvet nuance. Long lasting. Aromatic, apple, earthy, amber woody, red fruit, pine

## PERFUMERY USAGE

In Astromeran AB08066, the stimulating notes of musk and the rousing qualities of wood waltz together like no other to bring you warmth, joy and vibrancy



**ASTRONE AB08074**

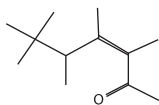
CAS # 81786-73-4

---

SWEET, WOODY, ROOTY ODOUR

# ASTRONE AB08074

CAS #81786-73-4



3-hepten-2-one, 3,4,5,6,6-pentamethyl-, (Z)-

## ODOUR FAMILY



Woody



## TENACITY

Lasts for 12 hour(s)  
at 100.00% on a  
smelling strip

12  
hour

*A captivating aroma ingredient, Astrone AB08074 blends together the nuances of rooty notes with the fierceness of woody and musk essence*

## PHYSICO-CHEMICAL PROPERTIES

Molecular Weight g/mol	<b>182.3</b>
Refractive Index at 20 °C	<b>1.4500 - 1.4600</b>
Specific Gravity at 20 °C	<b>0.8620 - 0.8720</b>
Appearance	<b>Colorless to pale yellow clear liquid</b>
Log P (Measured) at 20 °C	<b>3.77 °C</b>
Flash Point °C (TCC)	<b>85.56 °C</b>
Vapour Pressure mmHG at 25.00 °C	<b>0.028000 °C</b>
Boiling Point °C	<b>246.20 °C</b>

## SENSORY DESCRIPTION

Sweet, Woody, Rooty Odour

## PERFUMERY USAGE

The tantalizing tripartite- rooty, woody and musky, spin a sensational scent in Astrone AB08074 to remind you of lush forests and the great, green outdoors



**CAMBRETTOLIDE  
AB15137**

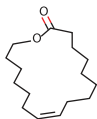
CAS # 28645-51-4

---

INTENSE AND POWERFUL MUSKY ODOUR

# CAMBRETTOLIDE AB15137

CAS # 28645-51-4



(10Z)-1-oxacycloheptadec-10-en-2-one

## ODOUR FAMILY



Musk



## TENACITY

Lasts for 248 hour(s)  
at 100.00% on a  
smelling strip

*Fleshy and fragrant berries and intoxicating notes of musk come to the fore in a stunning combination in Cambrettolide AB15137*

### PHYSICO-CHEMICAL PROPERTIES

Molecular Weight g/mol	<b>252.40</b>
Refractive Index at 25 °C	<b>1.4747 - 1.4797</b>
Specific Gravity at 25 °C	<b>0.945 - 0.953</b>
Appearance	<b>Clear Colorless Liquid</b>
Log P (Measured) at 23 °C	<b>6.7 °C</b>
Flash Point °C	<b>&gt;100 °C</b>
Vapour Pressure Pa at 25 °C	<b>0.003 °C</b>
Boiling Point °C	<b>254 °C</b>

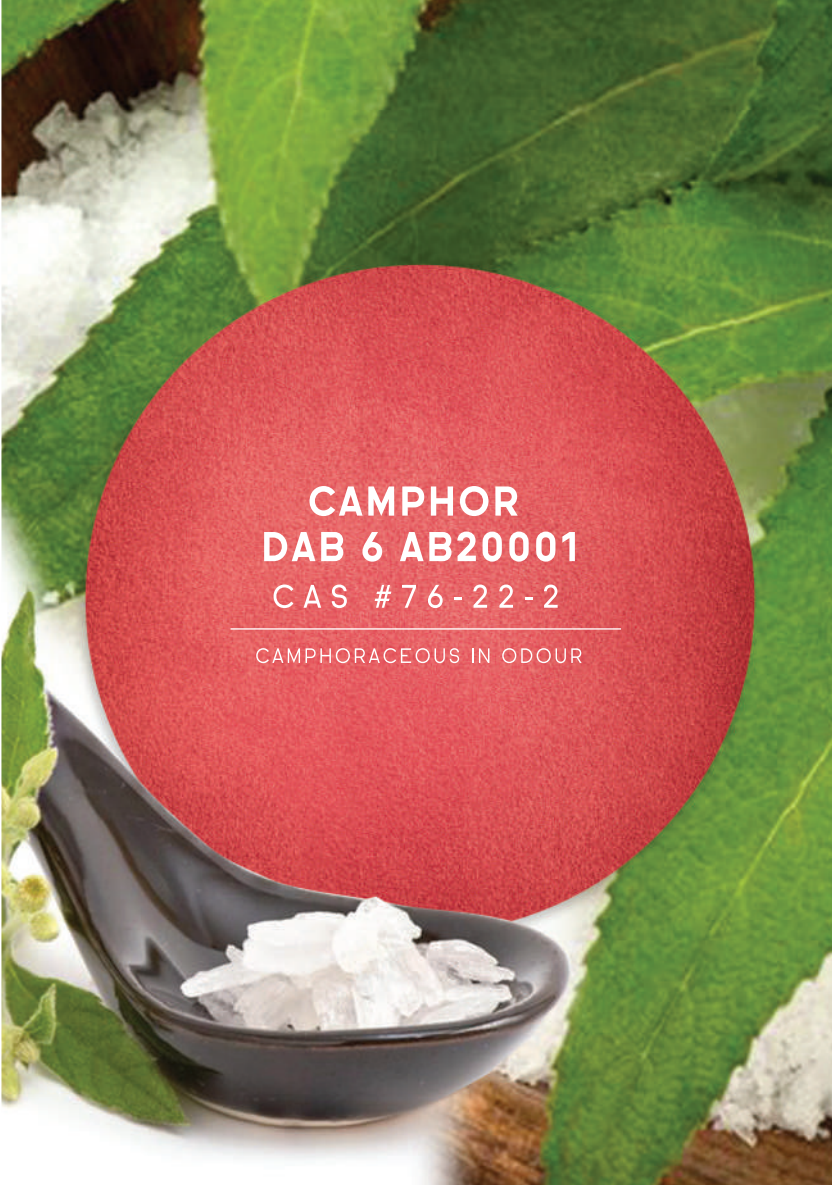
### SENSORY DESCRIPTION

Intense And Powerful Musky  
Odour

### PERFUMERY USAGE

The mesmerizing notes of musk intermingle beautifully with the flush nature of berries to bring you a buoyant scent in Cambrettolide AB15137





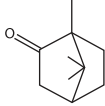
**CAMPHOR**  
**DAB 6 AB20001**  
CAS # 76-22-2

---

CAMPHORACEOUS IN ODOUR

# CAMPHOR DAB 6 AB20001

CAS #76-22-2



1,7,7-trimethylbicyclo  
[2.2.1]heptan-2-one

## ODOUR FAMILY



Camphoraceous

*Fragrant and cooling, Camphor DAB 6 AB20001 emits a fresh and intense scent with a classic appeal that makes it a one of a kind find*

### PHYSICO-CHEMICAL PROPERTIES

Molecular Weight g/mol	<b>152.23</b>
Refractive Index at 25 °C	-
Specific Gravity at 25 °C	-
Appearance	<b>White crystalline</b>
Log P (Measured) at 25 °C	<b>2.414 °C</b>
Flash Point °C	<b>64 °C</b>
Vapour Pressure mmHG at 25.00 °C	<b>0.650000 °C</b>
Melting Point °C	<b>170 – 180 °C</b>

### SENSORY DESCRIPTION

Camphoraceous in Odour

### PERFUMERY USAGE

Our Camphor DAB 6 AB20001 combines a whirlwind of freshness and intensity to bring you a scent that is versatile with a bitter tang and cool undertones

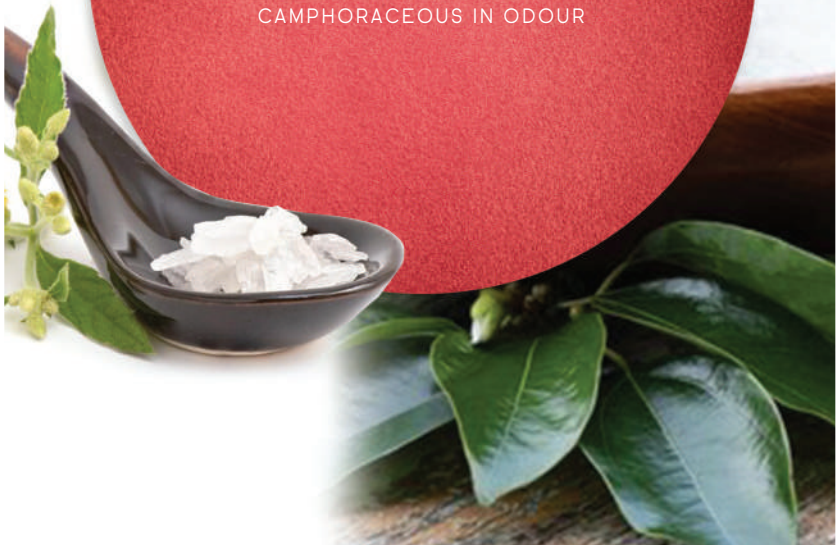


**CAMPHOR**  
**DAB 8 AB20002**

CAS # 76-22-2

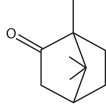
---

CAMPHORACEOUS IN ODOUR



# CAMPHOR DAB 8 AB20002

CAS #76-22-2



1,7,7-trimethylbicyclo  
[2.2.1]heptan-2-one

## ODOUR FAMILY



Camphoraceous

*Fragrant and cooling, Camphor DAB 8 AB20002 emits a fresh and intense scent with a classic appeal that makes it a one of a kind find*

### PHYSICO-CHEMICAL PROPERTIES

Molecular Weight g/mol	<b>152.23</b>
Refractive Index at 25 °C	-
Specific Gravity at 25 °C	-
Appearance	<b>White crystalline</b>
Log P (Measured) at 25 °C	<b>2.414 °C</b>
Flash Point °C	<b>64 °C</b>
Vapour Pressure mmHG at 25.00 °C	<b>0.650000 °C</b>
Melting Point °C	<b>174 – 179 °C</b>

### SENSORY DESCRIPTION

Camphoraceous in Odour

### PERFUMERY USAGE

Our Camphor DAB 8 AB20002 combines a whirlwind of freshness and intensity to bring you a scent that is versatile with a bitter tang and cool undertones



**CAMPHOR**  
**GF/BQ AB08002**

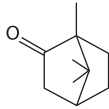
CAS#76-22-2

---

CAMPHORACEOUS IN ODOUR

# CAMPHOR GF/BQ AB08002

CAS#76-22-2



1,7,7-trimethylbicyclo  
[2.2.1]heptan-2-one

## ODOUR FAMILY



Camphoraceous

*The penetrating odour of CAMPHOR GF/BQ AB08002 can add a dramatic effect on its own or bring a whole new game of vibrancy when added with complimentary ingredients*

### PHYSICO-CHEMICAL PROPERTIES

Molecular Weight g/mol	<b>152.237</b>
Refractive Index at 25 °C	-
Specific Gravity at 25 °C	-
Appearance	<b>White Crystalline</b>
Log P (Measured) at 25 °C	<b>2.414 °C</b>
Flash Point °C	<b>64.44 °C</b>
Vapour Pressure mmHG at 25.00 °C (est)	<b>0.650000 °C</b>
Melting Point °C	<b>165 - 179 °C</b>

### SENSORY DESCRIPTION

Camphoraceous in Odour

### PERFUMERY USAGE

Camphor GF/BQ AB08002 bitter and intense notes are offset by its innate freshness and cool notes to bring to fore a scent that is bold, striking and refreshing



**CAMPBOR PHARMA  
(USP/EP/BP/JP) AB08005**

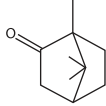
CAS # 76-22-2

---

CAMPBORACEOUS IN ODOUR

# CAMPHOR PHARMA (USP/EP/BP/JP) AB08005

CAS #76-22-2



1,7,7-trimethylbicyclo  
[2.2.1]heptan-2-one

## ODOUR FAMILY



Camphoraceous

*Fragrant and cooling, CamphorPharma (USP/EP/BP/JP) AB08005 emits a fresh and intense scent with a classic appeal that makes it a one of a kind find*

### PHYSICO-CHEMICAL PROPERTIES

Molecular Weight g/mol	<b>152.237</b>
Refractive Index at 25 °C	-
Specific Gravity at 25 °C	-
Appearance	<b>White Crystalline Powder</b>
Log P (Measured) at 25 °C	<b>2.414 °C</b>
Flash Point °C	<b>64.44 °C</b>
Vapour Pressure mmHG at 25.00 °C	<b>0.650000 °C</b>
Melting Point °C	<b>174 - 179 °C</b>

### SENSORY DESCRIPTION

Camphoraceous in Odour

### PERFUMERY USAGE

Our Camphor Pharma (USP/EP/BP/JP) AB08005 combines a whirlwind of freshness and intensity to bring you a scent that is versatile with a bitter tang and cool undertones





**CAPINONE AB08028**

CAS# 3338-56-5

---

SWEET, WOODY

# CAPINONE AB08028

CAS#3338-56-5



2-Propanone, 1- (decahydro-4,8,8-trimethyl-1,4-methanoazulen-9-ylidene)-, [1S-(1a,3aβ,4a,8aβ)]-

## ODOUR FAMILY



Woody



## TENACITY

Lasts for > 392 hour(s)  
@ 100.00 % on a smelling strip

*Sweet, earthy, woody and flavourful, Capinone AB08028 is composed to perfection so the end product is a masterpiece in itself*

### PHYSICO-CHEMICAL PROPERTIES

Molecular Weight g/mol	<b>246</b>
Refractive Index at 25 °C	<b>1.5050 - 1.5200</b>
Specific Gravity at 25 °C	<b>0.9900 - 1.010</b>
Appearance	<b>Pale yellow to yellow clear viscous liquid</b>
Log P (Measured)	-
Flash Point °C (TCC)	<b>&gt; 120 °C</b>
Vapour Pressure	-
Boiling Point °C	<b>300 - 320 °C</b>

### SENSORY DESCRIPTION

Sweet, Woody

### PERFUMERY USAGE

The warm notes of wood make for a dramatic impression that is enhanced further with a touch of sweet notes in Capinone AB08028



# CAPOLENE AB08041

SWEET, PINEY, CAMPHORACEOUS

# CAPOLENE AB08041

## ODOUR FAMILY



Pine

*Capolene AB08041 will remind you of a cool breeze hung with pine, as it beautifully captures notes of sweetness, piney and campherourius in an exquisite scent*

### PHYSICO-CHEMICAL PROPERTIES

Molecular Weight g/mol	-
Refractive Index at 25 °C	<b>1.4700 - 1.4800</b>
Specific Gravity at 25 °C	<b>0.860 - 0.870</b>
Appearance	<b>Clear liquid</b>
Log P (Measured)	-
Flash Point °C (TCC)	<b>&gt; 45 °C</b>
Vapour Pressure	-
Boiling Point °C	-

### SENSORY DESCRIPTION

Sweet, Piney, Camphoraceous

### PERFUMERY USAGE

The scent of pine trees is steeped in nostalgia. Add to that a tinge of sweetness and camphorous, and you get a scent that is as sensational as it can get. Perhaps that's what makes our Capolene AB08041 such a winner



**CAPTAITE AB15142**

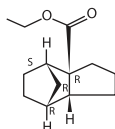
CAS#80657-64-3

---

FRUITY, WOODY, FLORAL,  
CITROUSY ODOUR

# CAPTAITE AB15142

CAS#80657-64-3



ethyl hexahydro-4,7-  
methanoindane-  
3alpha-carboxylate

## ODOUR FAMILY



Fruity



## TENACITY

Lasts for 144 hour(s)  
at 100.00% on a  
smelling strip

*The zing of citrus fruits, the warmth of woody notes and the sweet scent of florals make for a sassy scent in Captaite AB15142*

### PHYSICO-CHEMICAL PROPERTIES

Molecular Weight g/mol	<b>208.301</b>
Refractive Index at 25 °C	<b>1.480 - 1.489</b>
Specific Gravity at 25 °C	<b>1.034 - 1.051</b>
Appearance	<b>Colourless liquid</b>
Log P (Measured)	<b>3.69 °C</b>
Flash Point °C (closed cup)	<b>104 °C</b>
Vapour Pressure mm/Hg at 25 °C (est)	<b>0.011000 °C</b>
Boiling Point °C	<b>254.00 - 261.00 °C</b>

### SENSORY DESCRIPTION

Fruity, Woody, Floral,  
Citrusy Odour

### PERFUMERY USAGE

Tangy, citrusy and tantalizing, Captaite AB15142 is brimming with freshness and a hint of woody and floral to bring you an unforgettable scent



**CHAMOMILE ISO  
BUTYRATE AB18011**

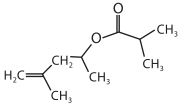
CAS #80118-06-5

---

A UNIQUE FRUITY, AROMATIC  
ESTER NOTE THAT IS  
REMINISCENT OF THE  
CHARACTER OF  
CHAMOMILE.

# CHAMOMILE ISO BUTYRATE AB18011

CAS #80118-06-5



4-methylpent-4-en-2-yl 2-methylpropanoate

## ODOUR FAMILY



## TENACITY

Lasts for 12 hour(s) at 100.00% on a smelling strip

*Reminiscent of the sweet-scented chamomile flowers, its namesake aroma ingredient Chamomile Iso Butyrate AB18011 will let you embark on a trail studded with mouth watering fruits and magical flowers*

### PHYSICO-CHEMICAL PROPERTIES

Molecular Weight g/mol	<b>170.25</b>
Refractive Index at 25 °C	<b>1.4000-1.4300</b>
Specific Gravity at 25 °C	<b>0.8500-0.8700</b>
Appearance	<b>Clear Colorless Liquid</b>
Log P (Measured)	<b>3.4 °C</b>
Flash Point °C	<b>57.5 °C</b>
Vapour Pressure mm/Hg at 20 °C	<b>1.00000 °C</b>
Boiling Point °C	<b>185.00 °C</b>

### SENSORY DESCRIPTION

A Unique Fruity, Aromatic Ester Note that is Reminiscent of The Character of Chamomile

### PERFUMERY USAGE

The sweetness of chamomile flowers gets a tangy and delicious twist of fresh fruits and fragrant flowers in Chamomile Iso Butyrate AB18011 for a truly mesmerising experience





**CHANDANOL AB22003**

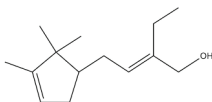
CAS# 28219-61-6

---

WOODY, SANDALWOOD, MILKY  
POWERFUL

# CHANDANOL AB22003

CAS#28219-61-6



(E)-2-ethyl-4-(2,2,3-trimethyl-1-cyclopent-3-enyl)but-2-en-1-ol

## ODOUR FAMILY



Woody



## TENACITY

400 hour(s)  
at 100.00 %

*Chandalol AB22003 provides a strong woody, delicate sandalwood and a milky tonality with an extraordinary performance to almost any fragrance type.*

### PHYSICO-CHEMICAL PROPERTIES


Molecular Weight g/mol	<b>208.34</b>
<hr/>	
Refractive Index at 25 °C	<b>1.486 - 1.490</b>
<hr/>	
Specific Gravity at 25 °C	<b>0.914 - 0.928</b>
<hr/>	
Appearance	<b>Colourless to pale yellow color liquid</b>
<hr/>	
Log P (Measured) at 30 °C	<b>4.3 °C</b>
<hr/>	
Flash Point °C	<b>92.78 °C</b>
<hr/>	
Vapour Pressure mmHG at 25.00 °C (est)	<b>0.000280 mm °C</b>
<hr/>	
Boiling Point °C	-

### SENSORY DESCRIPTION

Woody, Sandalwood, Milky  
Powerful

### PERFUMERY USAGE

Masking agent and  
Perfuming Agent



**CHANDANOL LEAVO  
AB22004**

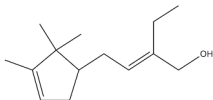
CAS# 28219-61-6

---

WOODY, SANDALWOOD, FLORAL  
DIFFUSIVE

# CHANDANOL LEAVO AB22004

CAS#28219-61-6



(E)-2-ethyl-4-(2,2,3-trimethyl-1-cyclopent-3-enyl)but-2-en-1-ol

## ODOUR FAMILY



Woody



## TENACITY

400 hour(s)  
at 100.00 %

*Chandanol Leavo AB22004 profile is typically woody. The rectification process concentrates the noble woody, sandalwood and floral notes for an unforgiving and sleek elegant inspiration.*

### PHYSICO-CHEMICAL PROPERTIES

Molecular Weight g/mol	<b>208.34</b>
Refractive Index at 25 °C	<b>1.486 - 1.490</b>
Specific Gravity at 25 °C	<b>0.914 - 0.928</b>
Appearance	<b>Colourless to pale yellow color liquid</b>
Log P (Measured) at 30 °C	<b>4.3 °C</b>
Flash Point °C	<b>92.78 °C</b>
Vapour Pressure mmHG at 25.00 °C (est)	<b>0.000280 mm °C</b>
Boiling Point °C	-

### SENSORY DESCRIPTION

Woody, Sandalwood, Floral  
Diffusive

### PERFUMERY USAGE

Masking agent and  
Perfuming Agent



**DIPENTENE**  
**AB08043**

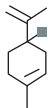
CAS #138-86-3

---

CITRUS HERBAL TERPENE CAMPHOR

# DIPENTENE AB08043

CAS # 138-86-3



1-methyl-4-prop-1-en-2-ylcyclohexenes

## ODOUR FAMILY



Citrus



## TENACITY

Lasts for 3 hour(s) at 100.00 % on a smelling strip

*A citrusy delight, Dipentene AB08043 evokes a sense of zestful joy with its striking notes of tropical and tangy fruits*

### PHYSICO-CHEMICAL PROPERTIES

Molecular Weight g/mol	<b>136.24</b>
Refractive Index at 25 °C	<b>1.475 - 1.485</b>
Specific Gravity at 25 °C	<b>0.84300 - 0.85100</b>
Appearance	<b>Clear liquid</b>
Log P (Measured)	<b>4.57 °C</b>
Flash Point °C	<b>Above 35 °C</b>
Vapour Pressure mmHG at 25.00 °C	<b>1.550000 °C</b>
Boiling Point °C	<b>176.00 - 178.00 °C</b>

### SENSORY DESCRIPTION

Citrus Herbal Terpene Camphor

### PERFUMERY USAGE

The magic of citrus gets intensified in Dipentene AB08043 that is packed with the fleshy and fragrant goodness of sweet limes, oranges and lemons



**DURGANOL AB18018**

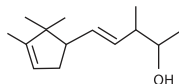
CAS# 67801-20-1

---

RICH, WOODY, SANDALWOOD,  
NUTTY

# DURGANOL AB18018

CAS#67801-20-1



3-Methyl-5- (2,2,3-trimethyl-3-cyclopenten-1-yl)- 4-penten-2-ol (& isomers)

## ODOUR FAMILY



Woody



## TENACITY

Lasts for 400 hour(s) at 100.00% on a smelling strip

*Our Durganol AB18018 brings every perfumer a unique blend of intensity and elegance through the rich aroma of sandalwood*

### PHYSICO-CHEMICAL PROPERTIES

Molecular Weight g/mol	<b>208.34</b>
Refractive Index at 25 °C	<b>1.4700 - 1.4850</b>
Specific Gravity at 25 °C	<b>0.8950 - 0.9150</b>
Appearance	<b>Colourless to pale yellow clear liquid</b>
Log P (Measured)	<b>4.2 °C</b>
Flash Point °C	<b>&gt;100 °C</b>
Vapour Pressure mmHg at 25.00 °C	<b>0.000281 °C</b>
Boiling Point °C	<b>287 - 288 °C</b>

### SENSORY DESCRIPTION

Rich, Woody, Sandalwood, Nutty

### PERFUMERY USAGE

The woody rush of sandalwood comes alive in a crescendo of aromas to bring you Durganol AB18018. Its power-packed and intense note, coupled with its vitality, make it the perfect pick for a range of products





**FRESCAMENTH  
AB19008**

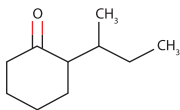
CAS #14765-30-1

---

MINTY, HERBAL, FRESH IN ODOUR

# FRESCAMENTH AB19008

CAS # 14765-30-1



2-(butan-2-yl)cyclohexan-1-one

## ODOUR FAMILY



Mentholic



## TENACITY

Lasts for 4 hour(s) at  
100.00 % on a  
smelling strip

*Frescamenth AB19008 is a minty fresh fragrance that captures a blast of menthol to bring you a one-of-kind aroma ingredient*

### PHYSICO-CHEMICAL PROPERTIES

Molecular Weight g/mol **154.25**

Refractive Index at 25 °C **1.4550 – 1.4590**

Specific Gravity at 25 °C **0.9100 – 0.9200**

Appearance **Colourless clear  
viscous liquid**

Log P (Measured) **2.729 °C**

Flash Point °C **82.22 °C**

Vapour Pressure  
mmHG at 25.00 °C **0.163000 °C**

Boiling Point °C **221 °C**

### SENSORY DESCRIPTION

Minty, Herbal, Fresh in Odour

### PERFUMERY USAGE

Fresh, zestful and exuberant, Frescamenth AB19008 brings you a scent that is also bejeweled with sage and peppermint



**FRESCONE AB20009**

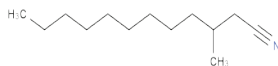
CAS# 85351-07-1

---

POWERFUL ALDEHYDIC, CITRUS,  
MANDARINE

# FRESCONE AB20009

CAS#85351-07-1



3-methyldodecanonitrile

## ODOUR FAMILY



Citrus



## TENACITY

140 hour(s)  
at 100.00 %

*Frescone AB20009 with a trendy Aldehydic citrus connotation and with soft Mandarin undertones*

### PHYSICO-CHEMICAL PROPERTIES

Molecular Weight g/mol **195.35**

Refractive Index at 25 °C **1.435-1.445**

Specific Gravity at 25 °C **0.820-0.830**

Appearance **Clear Colourless liquid**

Log P (Measured) at 30 °C **5.115 °C**

Flash Point °C **81.11°C**

Vapour Pressure  
mmHG at 25.00 °C (est) **0.003000mm °C**

Boiling Point °C **-**

### SENSORY DESCRIPTION

Powerful Aldehydic, Citrus,  
Mandarine

### PERFUMERY USAGE

Perfuming Agent



**HERBACYCLOHEXANE**  
**AB18010**

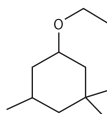
CAS #67583-77-1

---

GREEN, FRUITY, HERBAL

# HERBACYCLOHEXANE AB18010

CAS #67583-77-1



3-ethoxy-1,1,5-trimethylcyclohexane

## ODOUR FAMILY



Herbal



## TENACITY

Lasts for 2 hour(s) at  
100% on a smelling strip

*The top notes of apple and rose give way to lustrous greens for a herbal and fruity scent that make for a hauntingly beautiful aroma in Herbacyclohexane AB18010*

## PHYSICO-CHEMICAL PROPERTIES

Molecular Weight g/mol	170.29
Refractive Index at 25 °C	1.4100 - 1.4500
Specific Gravity at 25 °C	0.8300 – 0.8500
Appearance	Colourless to Pale yellow clear liquid
Log P (Measured)	3.955 °C
Flash Point °C	59.10 °C
Vapour Pressure mmHG at 25 °C	0.852000 °C
Boiling Point °C	187.00 - 188.00 °C

## SENSORY DESCRIPTION

Green, Fruity, Herbal

## PERFUMERY USAGE

Herbacyclohexane AB18010 is fancied with plump apples and blazing roses for a distinctive and delectable scent



**ISOBORNEOL  
POWDER AB08011**

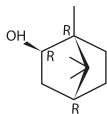
CAS #124-76-5

---

BALSAM CAMPHOR HERBAL WOODY

# ISOBORNEOL POWDER AB08011

CAS #124-76-5



(1R,4S,6R)-1,7,7-trimethylbicyclo  
[2.2.1]heptan-6-ol

## ODOUR FAMILY



Balsamic



## TENACITY

Lasts for 297 hour(s) at  
10% on a smelling strip

*Isoborneol Powder AB08011 is the perfect coming together of camphorous and woody notes in a combo that is intense and invigorating*

### PHYSICO-CHEMICAL PROPERTIES

Molecular Weight g/mol	<b>154.25</b>
Refractive Index at 25 °C	-
Specific Gravity at 25 °C	-
Appearance	<b>Semi Transparent Flakes</b>
Log P (Measured) at 20 - 25 °C	<b>2.32 to 2.92 °C</b>
Flash Point °C	<b>&gt;60 °C</b>
Vapour Pressure mm/HG at 25 °C. (est)	<b>0.040000 °C</b>
Melting Point °C	<b>210 - 214 °C</b>

### SENSORY DESCRIPTION

Balsam Camphor Herbal Woody

### PERFUMERY USAGE

Experience the ferocity of camphor and the richness of woody in Isoborneol Powder AB08011. It effortlessly puts two power notes together for a doubly delightful fragrance





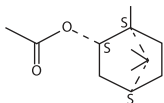
**ISOBORNYL  
ACETATE AB08031**

CAS#125-12-2

BALSAM, CAMPHOR, HERBAL,  
WOODY, SWEET

# ISOBORNYL ACETATE AB08031

CAS#125-12-2



[(1R,4S,6R)-1,7,7-trimethyl-6-bicyclo[2.2.1]heptanyl] acetate

## ODOUR FAMILY



Balsamic



## TENACITY

8 hour(s) at 10%  
on a smelling strip

*The vigor and versatility of pinecones intermingle with the warmth and majesty of wood for a fetching fragrance in Isobornyl Acetate AB08031*

### PHYSICO-CHEMICAL PROPERTIES

Molecular Weight g/mol	<b>196.29</b>
Refractive Index at 20 °C	<b>1.460 - 1.465</b>
Specific Gravity at 20 °C	<b>0.980 - 0.986</b>
Appearance	<b>Clear Liquid</b>
Log P (Measured)	<b>3.86 °C</b>
Flash Point °C (closed up)	<b>89 °C</b>
Vapour Pressure mm/Hg at 20 °C	<b>0.025000 °C</b>
Boiling Point °C	<b>227.00 - 228.00 °C</b>

### SENSORY DESCRIPTION

Balsam Camphor Herbal  
Woody Sweet

### PERFUMERY USAGE

Isobornyl Acetate AB08031 is packed with a scent that is a delicious mix of pinecones and deep woody notes



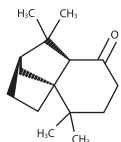
**KETONE - 101 AB08032**

CAS# 29461-13-0

WOODY, PATCHOULI

# KETONE-101 AB08032

CAS#29461 - 13 - 0



(1R,6S,8R)-2,2,7,7-tetramethyltricyclo[6.2.1.0<sup>{1,6}</sup>]undecan-5-one

## ODOUR FAMILY



Woody

*Ketone -101 AB08032 emanates an earthy, deep, cedar-esque scent, paired with complementing woody notes for an alluring aroma ingredient*

### PHYSICO-CHEMICAL PROPERTIES

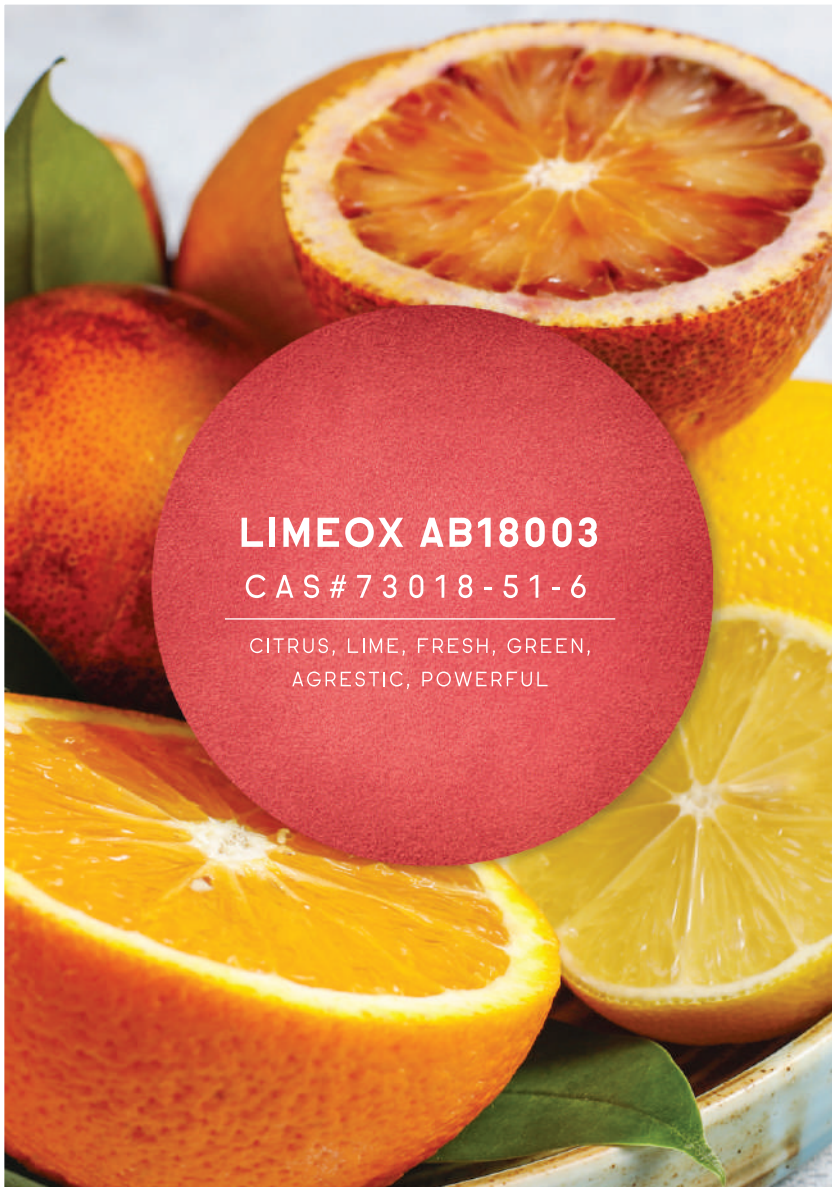
Molecular Weight g/mol	<b>220</b>
Refractive Index at 25 °C	<b>1.500 - 1.508</b>
Specific Gravity at 25 °C	<b>1.000 - 1.010</b>
Appearance	<b>Clear Liquid</b>
Log P (Measured)	<b>4.175 °C</b>
Flash Point °C	<b>Above 100 °C</b>
Vapour Pressure mmHg at 25 °C	<b>0.003000 °C</b>
Boiling Point °C	<b>286.00 - 287.00 °C</b>

### SENSORY DESCRIPTION

Woody, Patchouli

### PERFUMERY USAGE

The flamboyance of patchouli and the richness of wood combine in a sensory symphony in Ketone-101 AB08032 to bring you a scent that will forever remain etched in your heart



**LIMEOX AB18003**

CAS# 73018-51-6

---

CITRUS, LIME, FRESH, GREEN,  
AGRESTIC, POWERFUL

# LIMEOX AB18003

CAS#73018-51-6

## ODOUR FAMILY



Citrus



## TENACITY

12 hour(s)  
at 100.00% on  
a smelling strip

*Zesty and zingy, Limeox AB18003 combines the scent of citrus fruits with the wonderfully tart note of lime for a fragrance that is as enchanting as it can get*

### PHYSICO-CHEMICAL PROPERTIES

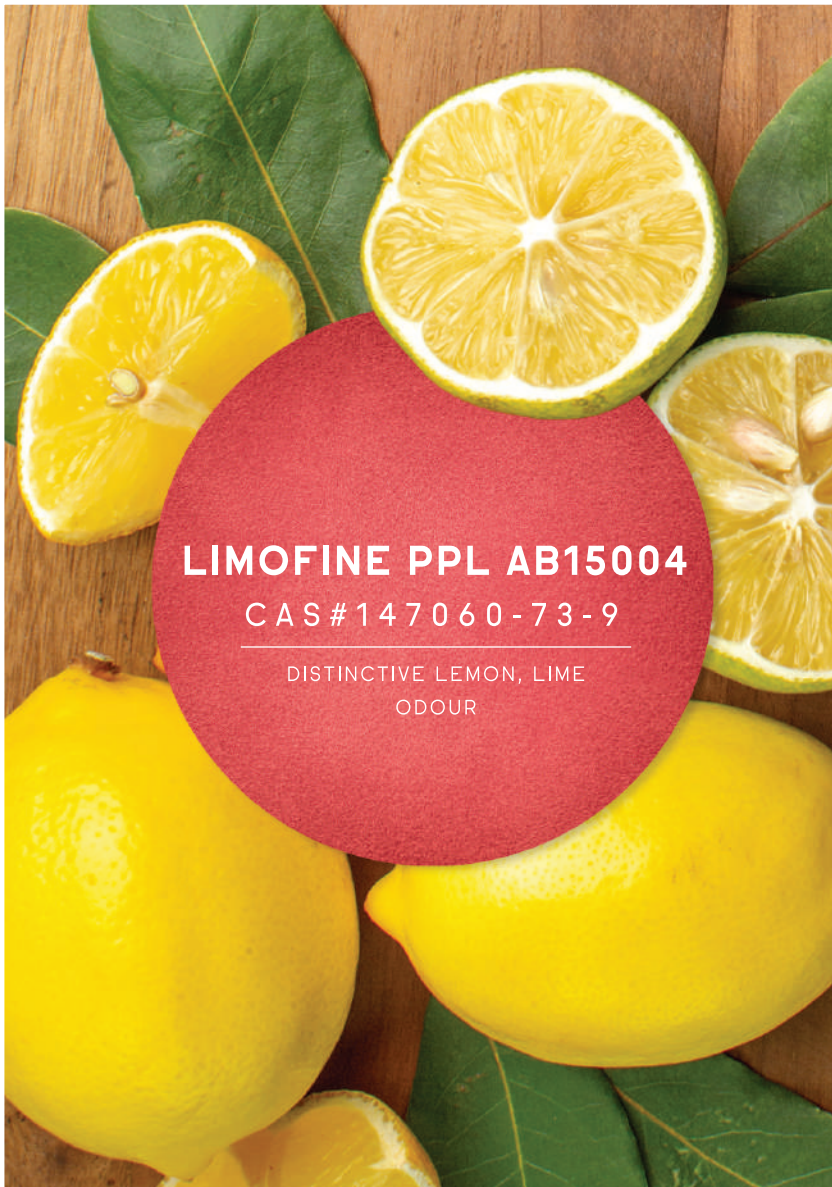
Molecular Weight g/mol	<b>290.49</b>
Refractive Index at 25 °C	<b>1.4500 - 1.4750</b>
Specific Gravity at 25 °C	<b>0.8450 - 0.8600</b>
Appearance	<b>Colourless to Pale Yellow Colour Liquid</b>
Log P (Measured)	<b>3.3 - 4.9 °C</b>
Flash Point °C	<b>44 °C</b>
Vapour Pressure mm/Hg at 20 °C	<b>1.173200 °C</b>
Boiling Point °C	<b>179 °C</b>

### SENSORY DESCRIPTION

Citrus, Lime, Fresh, Green,  
Agrestic, Powerful

### PERFUMERY USAGE

Light, refreshing and sweet  
with a whisper of tangy,  
Limeox AB18003 matches up  
scents from the citrus family  
for a delicate yet fierce  
fragrance



**LIMOFINE PPL AB15004**

**CAS # 147060-73-9**

---

DISTINCTIVE LEMON, LIME  
ODOUR

# LIMOFINE PPL AB15004

CAS#147060 - 73 - 9

## ODOUR FAMILY



Citrus



## TENACITY

Lasts for <4 hour(s)  
at 100.00% on a  
smelling strip

*Exploding with the freshness, juiciness and sharpness of lime notes, Limofine PPL AB15004 has the power to keep one cool on a sultry day*

### PHYSICO-CHEMICAL PROPERTIES

Molecular Weight	NA
Refractive Index at 25 °C	1.4500 - 1.4700
Specific Gravity at 25 °C	0.870 - 0.9007
Appearance	Colourless to Pale Yellow Liquid
Log P (Measured)	NA
Flash Point °C (closed cup)	21.11 °C
Vapour Pressure	NA

### SENSORY DESCRIPTION

Distinctive Lemon, Lime  
Odour

### PERFUMERY USAGE

Its inherent vibrancy and extraordinary freshness make lime one of the most loved and recognised scents in the world. Limofine PPL AB15004 is bursting with the goodness of this hesperidic fruit





**LIMOFINE STW  
AB15002**

CAS# 90480-35-6

---

DISTINCTIVE LEMON, LIME  
ODOUR

# LIMOFINE STW AB15002

CAS#90480-35-6

## ODOUR FAMILY



Citrus

*Limofine STW AB15002 bunches up a melange of fresh and citrusy scents in an aromatic bouquet for a real treat to the senses*

### PHYSICO-CHEMICAL PROPERTIES

Molecular Weight	-
Refractive Index at 25 °C	<b>1.4925 - 1.5070</b>
Specific Gravity at 25 °C	<b>0.900 - 0.915</b>
Appearance	<b>Colourless to Pale Yellow Liquid</b>
Log P (Measured) at 25 °C	<b>0.759 - 5.48 °C</b>
Flash Point °C (closed cup)	<b>17 °C</b>
Vapour Pressure hPa at 20 °C	<b>41.9 °C</b>
Boiling Point °C	<b>108 - 111 °C</b>

### SENSORY DESCRIPTION

Distinctive Lemon, Lime  
Odour

### PERFUMERY USAGE

Loaded with the lively and groovy notes of lemon, Limofine STW AB15002 makes for a classic scent that is quite a delight to add to a gamut of products



**MYSORNOL AB18019**

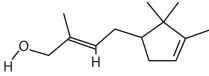
CAS# 28219-60-5

---

SANDALWOOD, WARM, SWEET IN  
ODOUR

# MYSORNOL AB18019

CAS#28219-60-5



2- methyl-4-(2,2,3-trimethyl-3-cyclopenten-1-yl)-2-buten-1-ol

## ODOUR FAMILY



Woody



## TENACITY

Lasts for 400 hour(s) at 100.00% on a smelling strip

*Take your senses on an enchanting voyage with a woody, rich and exotic sandalwood scent in Mysornol AB18019*

## PHYSICO-CHEMICAL PROPERTIES

Molecular Weight g/mol	194.31
Refractive Index at 20 °C	1.4830 - 1.4930
Specific Gravity at 20 °C	0.9180 - 0.9300
Appearance	Colourless to Pale Yellow Clear Viscous Liquid
Log P (Measured)	4.65 °C
Flash Point °C (TCC)	99.3 °C
Vapour Pressure mm/Hg at 25.00 °C	0.001000 °C
Boiling Point °C	262.8 °C

## SENSORY DESCRIPTION

Sandalwoody, Warm, Sweet in Odour

## PERFUMERY USAGE

Comforting and welcoming, the rich notes of sandalwood in Mysornol AB18019 will take you to the deep forests of Southern India. A place you may never want to return from



**NECTANONE**  
**AB18013**

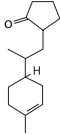
CAS #95962-14-4

---

PEACH, FRUITY, APRICOT, LACTONIC,  
OILY, WAXY IN ODOUR

# NECTANONE AB18013

CAS #95962-14-4



2-(p- menthen-1-ene-9-yl)  
cyclopentan-1-one

## ODOUR FAMILY



Fruity



## TENACITY

380 hour(s) at  
100.00 %

*The joy of tropical fruits with an undertone of blooming jasmines come to life in Nectanone AB18013 that complements a range of usages*

### PHYSICO-CHEMICAL PROPERTIES

Molecular Weight g/mol	<b>220.35</b>
Refractive Index at 25 °C	<b>0.960 - 0.970</b>
Specific Gravity at 25 °C	<b>1.490 - 1.500</b>
Appearance	<b>Colorless clear liquid</b>
Log P (Measured) at 20 °C	<b>4.8 °C</b>
Flash Point °C (TCC)	<b>162.22 °C</b>
Vapour Pressure mmHG at 25.00 °C	<b>0.000367 °C</b>
Boiling Point °C	<b>287.00 - 288.00 °C</b>

### SENSORY DESCRIPTION

Peach, Fruity, Apricot, Lactonic,  
Oily, Waxy in Odour

### PERFUMERY USAGE

Lush plums and blooming  
jasmines make for a delectable  
pair in Nectanone AB18013,  
what with the fragrance being  
the ultimate pick-me-up



**NEROLIN**  
**BROMELIA AB15112**

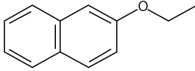
CAS# 93-18-5

---

SOFT, FLORAL AND VERY  
TENACEOUS  
NEROLI ODOUR

# NEROLIN BROMELIA AB15112

CAS#93-18-5



2-ethoxynaphthalene

## ODOUR FAMILY



Naphthyl



## TENACITY

Lasts for 400 hour(s)  
at 20.00% in  
dipropylene glycol

*The slightly bitter tang of neroli lets it's playful floral accords sparkle so much more. Perhaps that is what makes the fragrance in Nerolin Bromelia AB15112 intense yet soft*

### PHYSICO-CHEMICAL PROPERTIES

Molecular Weight g/mol	172.227
Refractive Index at 25 °C	-
Specific Gravity at 25 °C	-
Appearance	White Crystalline Powder
Log P (Measured) at 25 °C	3.747 °C
Flash Point °C (closed cup)	140.6 °C
Vapour Pressure mm/Hg	0.005000 °C
Melting Point °C	35 - 38 °C

### SENSORY DESCRIPTION

Soft, Floral and Very  
Tenacious Neroli Odour

### PERFUMERY USAGE

Composed of neroli flowers in full bloom, the notes of Nerolin Bromelia AB15112 will awaken your spirit and douse you in an intoxicating scent





## **PINE OIL AB08012**

CAS# 8002-09-3

---

SWEET FRESH PINE WOODY HAY  
GREEN HARSH TERPENE  
CONIFEROUS DRY-WOODY  
RESINOUS-PINEY

# PINE OIL AB08012

CAS#8002-09-3

## ODOUR FAMILY



Terpenic



## TENACITY

Lasts for 16 hour(s)  
at 100.00% on a  
smelling strip

*The perfect ode to pine trees and the holiday season, Pine Oil AB08012 is bubbling with piney, sweet, woody and green notes*

### PHYSICO-CHEMICAL PROPERTIES

Molecular Weight	-
Refractive Index at 20 °C	<b>1.4740 - 1.4840</b>
Specific Gravity at 20 °C	<b>0.860 - 0.890</b>
Appearance	<b>Clear Liquid</b>
Log P (Measured)	-
Flash Point °C	<b>35 °C</b>
Vapour Pressure °C	-
Melting Point °C	-

### SENSORY DESCRIPTION

Sweet Fresh Pine Woody Hay  
Green Harsh Terpene  
Coniferous Dry-woody  
Resinous-piney

### PERFUMERY USAGE

The freshness of pine and the rustic warmth of wood dance in captivating sync for a green and zesty fragrance in Pine Oil AB08012



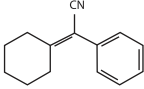
**ROSE NITRILE AB15143**

CAS#10461-98-0

FLORAL, GERANIUM,  
GRAPEFRUIT, FRESH

# ROSE NITRILE AB15143

CAS#10461-98-0



2-cyclohexylidene-2-phenylacetonitrile

### ODOUR FAMILY



Floral



### TENACITY

Lasts for 400 hour(s)  
at 100.00% on a  
smelling strip

*A bouquet of sweet fragrances come together for a grand celebration in Rose Nitrile AB15143. The brilliance of rose and the sweet nuances of geranium meet the sharp undertones of grapefruit*

### PHYSICO-CHEMICAL PROPERTIES

Molecular Weight g/mol	<b>197.28</b>
Refractive Index at 25 °C	<b>1.5600-1.5665</b>
Specific Gravity at 25 °C	<b>1.0200-1.0320</b>
Appearance	<b>Colourless to faint yellow</b>
Log P (Measured) at 30 °C	<b>2 °C</b>
Flash Point °C	<b>152.3 °C</b>
Vapour Pressure mm/Hg at 25 °C	<b>0.000042 °C</b>
Boiling Point °C	<b>350.00 - 351.00 °C</b>

### SENSORY DESCRIPTION

Floral, Geranium, Grapefruit,  
Fresh

### PERFUMERY USAGE

Rose and geranium pair in a gorgeous marriage that is uplifted by the sharpness of grapefruit, in Rose Nitrile AB15143, to bring you a versatile and evocative scent



## **RHUBORAN AB20019**

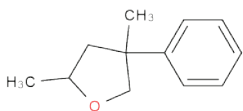
**CAS# 82461-14-1**

---

**RHUBARB, GREEN, FRESH,  
CITRUS**

# RHUBORAN AB20019

CAS#82461-14-1



2,4-dimethyl-4-phenyloxolane

## ODOUR FAMILY



Citrus



## TENACITY

24 hour(s)  
at 100.00 %

*Rhuboran AB20019 with a trendy Aldehydic citrus connotation and with soft Mandarin undertones*

### PHYSICO-CHEMICAL PROPERTIES

Molecular Weight g/mol	<b>176.28</b>
Refractive Index at 25 °C	<b>1.510-1.520</b>
Specific Gravity at 25 °C	<b>0.985-0.995</b>
Appearance	<b>Pale yellow to yellow color liquid</b>
Log P (Measured) at 30 °C	<b>2.773 °C</b>
Flash Point °C	<b>&gt; 93.33 °C</b>
Vapour Pressure mmHG at 25.00 °C (est)	<b>0.038000mm °C</b>
Boiling Point °C	-

### SENSORY DESCRIPTION

Rhubarb, Green, Fresh, Citrus

### PERFUMERY USAGE

Perfuming Agents



**SAFRANAL AB15139**

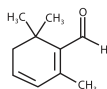
CAS#116-26-7

---

HERBACEOUS, SOMEWHAT  
TOBACCO, GREEN, FLORAL,  
LEATHER, AROMA

# SAFRANAL AB15139

CAS#116-26-7



2,6,6-trimethylcyclohexa-1,3-diene-1-carbaldehyde

## ODOUR FAMILY



Herbal



## TENACITY

Lasts for 64 hour(s)  
at 100.00% on a  
smelling strip

*Safranal AB15139 is an organic compound extracted from the dainty crocus flower found in the Kashmir valley*

### PHYSICO-CHEMICAL PROPERTIES

Molecular Weight g/mol	<b>150.22</b>
Refractive Index at 25 °C	<b>1.515 - 1.535</b>
Specific Gravity at 25 °C	<b>0.965 - 0.985</b>
Appearance	<b>Yellow coloured liquid</b>
Log P (Measured) at 20 °C	<b>2.7 °C</b>
Flash Point °C	<b>84.9 °C</b>
Vapour Pressure mm/Hg at 25 °C	<b>0.134000 °C</b>
Boiling Point °C	<b>172.00 °C</b>

### SENSORY DESCRIPTION

Herbaceous Somewhat  
Tobacco Green Floral Leather  
Aroma

### PERFUMERY USAGE

Safranal AB15139 as a warm,  
fiery scent of smoky tobacco  
and rich leather, reminiscent  
of the wild outdoors





**SAJAGONATE AB18001**

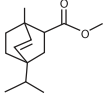
CAS# 68966-86-9

---

AROMATIC, PEPPER, LAUREL  
LEAF, WOODY.

# SAJAGONATE AB18001

CAS#68966-86-9



Methyl 4(or 1)-isopropyl-1(or 4)-methylbicyclo [2.2.2]oct-5-ene-2-carboxylate

## ODOUR FAMILY



Woody



## TENACITY

Lasts for 73 hour(s)  
at 100.00% on a  
smelling strip

*The woody notes in Sajagonate AB18001 not just add warmth and intensity but also depth to the fragrance. The majesticity of Mahogany adds a smoky and spicy scent*

### PHYSICO-CHEMICAL PROPERTIES

Molecular Weight g/mol	<b>222.32</b>
Refractive Index at 25 °C	<b>1.4700 - 1.4850</b>
Specific Gravity at 25 °C	<b>0.9850 - 1.0000</b>
Appearance	<b>Clear colourless liquid</b>
Log P (Measured) at 40 °C	<b>5 °C</b>
Flash Point °C (closed cup)	<b>119 °C</b>
Vapour Pressure mmHg at 25 °C	<b>0.0147 °C</b>
Boiling Point °C	<b>261.00 - 262.00 °C</b>

### SENSORY DESCRIPTION

Aromatic, Pepper, Laurel Leaf, Woody

### PERFUMERY USAGE

Soak up a scent of woody, rich, elegant, and distinct notes in Sajagonate AB18001. It will definitely remind you of deep woodlands and lush greenery



**SANDALICA AB08104**

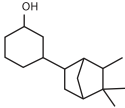
CAS# 3407-42-9

---

SANDALWOOD, CLEAN, SWEET,  
WOODY

# SANDALICA AB08104

CAS#3407-42-9



3-(5,5,6-trimethylbicyclo  
[2.2.1]hept-2-yl)  
cyclohexan-1-ol

## ODOUR FAMILY



Woody



## TENACITY

Lasts for 400  
hour(s) at 100.00%  
on a smelling strip

*The creamy and sensual notes of sandalwood in Sandalica AB08104 bring you a fragrance that is versatile, whimsical, sweet and vibrant. A classic find, Sandalica AB08104 is made of a heady dose of sandalwood for a sweet and sensual fragrance*

### PHYSICO-CHEMICAL PROPERTIES

Molecular Weight g/mol	<b>236.399</b>
Refractive Index at 20 °C	<b>1.5050-1.5120</b>
Specific Gravity at 25 °C	<b>0.96200 to 0.97400</b>
Appearance	<b>Clear viscous liquid</b>
Log P (Measured)	<b>5.313 °C</b>
Flash Point °C	<b>&gt;100 °C</b>
Vapour Pressure mmHG at 20 °C	<b>0.013300 °C</b>
Boiling Point °C	<b>145.00 °C</b>

### SENSORY DESCRIPTION

Sandalwood, Clean, Sweet  
Woody

### PERFUMERY USAGE

A classic find, Sandalica AB08104 is made of a heady dose of sandalwood for a sweet and sensual fragrance



**SEALONE AB18006**

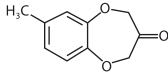
CAS# 28940-11-6

---

MARINE, MOSS, OZONE,  
FLORAL, FRESH

# SEALONE AB18006

CAS#28940-11-6



7-methyl-2H-benzo-  
1,5-dioxepin-3(4H)-one

## ODOUR FAMILY



Aqua, Ozone



## TENACITY

>600 hour(s)  
at 10.00% in  
dipropylene  
glycol

*Can't go to the sea? Bring the sea to you with the fresh and enigmatic fragrance of Sealone AB18006*

### PHYSICO-CHEMICAL PROPERTIES

Molecular Weight g/mol	178.17
Refractive Index at 25 °C	NA
Specific Gravity at 25 °C	NA
Appearance	White crystalline powder
Log P (Measured) at 30 °C	1.95 °C
Flash Point °C	166.67 °C
Vapour Pressure mmHG at 25 °C	0.001000 °C
Melting Point °C	35.0 - 43.0 °C

### SENSORY DESCRIPTION

Marine, Moss, Ozone, Floral,  
Fresh

### PERFUMERY USAGE

Topped with the aquatic tinges of moss, mint and seawater, and just a hint of underwater blooms, the fragrance in Sealone AB18006 is a throwback to all the times spent lounging by the beach



**SHAKTINOL AB18017**

CAS#107898-54-4

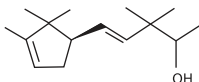
---

RICH, DIFFUSIVE, SANDALWOOD



# SHAKTINOL AB18017

CAS#107898-54-4



4-Penten-2-ol, 3, 3-dimethyl-5-(2,2,3-trimethyl-3-cyclopenten-1-yl)-

## ODOUR FAMILY



Sandalwood



## TENACITY

Lasts 2 weeks  
on a blotter

*The sensational scent of sandalwood explodes in a stunning symphony that will linger in your mind for a long time*

### PHYSICO-CHEMICAL PROPERTIES

Molecular Weight g/mol	<b>222.37</b>
Refractive Index at 25 °C	<b>1.465 - 1.485</b>
Specific Gravity at 25 °C	<b>0.890 - 0.915</b>
Appearance	<b>Colourless clear liquid</b>
Log P (Measured)	<b>4.77 °C</b>
Flash Point °C	<b>&gt;100 °C</b>
Vapour Pressure mmHG at 25 °C	<b>0.000075 °C</b>
Boiling Point °C	<b>298 °C</b>

### SENSORY DESCRIPTION

Rich, Diffusive, Sandalwood

### PERFUMERY USAGE

The invigorating notes of Sandalwood take you on an olfactory journey like nothing you have envisaged before





**SHIVANOL AB18016**

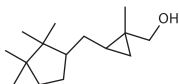
CAS#198404-98-7

---

SANDALWOOD, CREAMY, ROSY,  
POWERFUL

# SHIVANOL AB18016

CAS#198404-98-7



[1-Methyl-2-[(1,2,2-trimethylbicyclo [3.1.0] hex-3-yl) methyl] cyclopropyl] methanol ((Mixture) of diastereoisomers)

## ODOUR FAMILY



Sandalwood



## TENACITY

Lesser than 1 month on a blotter

*The sensational scent of sandalwood explodes in a stunning symphony that will linger in your mind for a long time*

### PHYSICO-CHEMICAL PROPERTIES

Molecular Weight g/mol	<b>222</b>
Refractive Index at 25 °C	<b>1.475 - 1.495</b>
Specific Gravity at 25 °C	<b>0.935 - 0.960</b>
Appearance	<b>Colourless clear viscous liquid</b>
Log P (Measured)	<b>4.34 °C</b>
Flash Point °C	<b>136 °C</b>
Vapour Pressure mmHG at 25 °C	<b>0.001 °C</b>
Boiling Point °C	<b>268 °C</b>

### SENSORY DESCRIPTION

Sandalwood, Creamy, Rosy, Powerful

### PERFUMERY USAGE

The invigorating notes of Sandalwood take you on an olfactory journey like nothing you have envisaged before



**TERPINEOL AB08019**

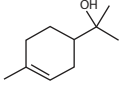
CAS# 98-55-5

---

PINE, TERPENE, LILAC, CITRUS,  
WOODY, FLORAL

# TERPINEOL AB08019

CAS#98-55-5



2-(4-methyl-1-cyclohex-3-enyl)propan-2-ol

## ODOUR FAMILY



Terpenic



## TENACITY

Lasts for 20 hour(s)  
@ 100.00 % on a  
smelling strip

*The subtle spritz of lilac intertwines with the citrusy and woody accords for a unique fragrance brimming with happy vibes in Terpineol AB08019*

### PHYSICO-CHEMICAL PROPERTIES

Molecular Weight g/mol	<b>154.253</b>
Refractive Index at 25 °C	<b>1.480-1.4850</b>
Specific Gravity at 25 °C	<b>0.93000 to 0.93600</b>
Appearance	<b>Clear Liquid</b>
Log P (Measured) at 30 °C	<b>2.6 °C</b>
Flash Point °C	<b>&gt;90 °C</b>
Vapour Pressure mm/Hg at 25.00 °C (est)	<b>0.028000 °C</b>
Boiling Point °C	<b>214.00-218.00 °C</b>

### SENSORY DESCRIPTION

Pine Terpene Lilac Citrus  
Woody Floral

### PERFUMERY USAGE

Velvety lilac and spicy, woody pine notes lay the path for a spectacular scent in Terpineol AB08019, to instantly pep up the mood



**TERPINYL  
ACETATE AB08033**

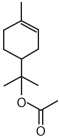
CAS# 80-26-2

---

SWEET, PLEASANT  
BERGAMOT, LAVENDER

# TERPINYL ACETATE AB08033

CAS#80-26-2



2-(4-methyl-1-cyclohex-3-enyl)propan-2-yl acetate

### ODOUR FAMILY



Herbal



### TENACITY

Lasts for 20 hour(s)  
@ 100.00 % on a  
smelling strip

*Bergamot brings a dash of sunny and citrusy, with a spicy edge in Terpinyl Acetate AB08033. This complex characteristic makes it a unique find. And when merged with the delicacy and herb-like chords of lavender, you have a charming scent at your disposal*

### PHYSICO-CHEMICAL PROPERTIES

Molecular Weight g/mol	<b>196.29</b>
Refractive Index (20 °C)	<b>1.4660-1.4700</b>
Specific Gravity (20 °C)	<b>0.9550-0.9650</b>
Appearance	<b>Clear Liquid</b>
Log P (Measured) at 30 °C	<b>4.4 °C</b>
Flash Point °C	<b>&gt;98 °C</b>
Vapour Pressure mmHG at 25.00 °C (est)	<b>0.039000 °C</b>
Boiling Point °C	<b>220.00 °C</b>

### SENSORY DESCRIPTION

Sweet, Pleasant Bergamot,  
Lavender

### PERFUMERY USAGE

Two stunning notes-  
bergamot and lavender,  
come alive in an olfactory  
explosion as a sweet,  
herbaceous and bright  
fragrance in Terpinyl  
Acetate AB08033



**NEW PRODUCT LAUNCHES  
FOR 2023**





**AMBER COEUR  
AB18009**

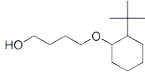
CAS #139504-68-0

AMBER, SOFT, RICH, DELICATE WOODY

# AMBER COEUR AB18009

CAS#139504-68-0

Launch Date - November 2023



1-(2-tert-butylcyclohexyl)  
oxybutan-2-ol

## ODOUR FAMILY



Amber



## TENACITY

> 100 hour(s)  
at 100 %

*A uniquely powerful amber woody molecule, Amber Coeur AB18009 provides extraordinary performance to almost any fragrance type.*

### PHYSICO-CHEMICAL PROPERTIES

Molecular Weight	<b>228.37</b>
Refractive Index at 25 °C	<b>1.460 - 1.470</b>
Specific Gravity at 25 °C	<b>0.930 - 0.940</b>
Appearance	<b>Clear Colorless Liquid</b>
Log P (Measured)	<b>4.05 °C</b>
Flash Point °C	<b>132 °C</b>
Vapour Pressure °C	<b>4.71 - 7.66 Pa @ 25 °C</b>
Melting Point °C	<b>-28.5 °C</b>

### SENSORY DESCRIPTION

Amber, Soft, Rich, Delicate  
woody

### PERFUMERY USAGE

Used as diluent & Perfuming  
agents



**AMBROZANE  
AB22005**

CAS# 6790-58-5

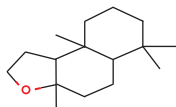
---

AMBERY, WOODY, CREAMY  
ANIMALIC

# AMBROZANE AB22005

CAS#6790-58-5

Launch Date - June 2023



(3aR,5aS,9aS,9bR)-3a,6,6,9a-tetramethyl-2,4,5,5a,7,8,9,9b-octahydro-1H-benzo[e][1]benzofuran

## ODOUR FAMILY



Amber



## TENACITY

>400 hour(s)  
at 10.00 % in  
dipropylene glycol

*Ambrozone AB 22005. Extremely powerful and elegant amber odor with a musky, woody tonality. It is highly diffusive and brings a unique ambery effect from top notes to dry down.*

## PHYSICO-CHEMICAL PROPERTIES

Molecular Weight g/mol **236.39**

Refractive Index at 25 °C -

Specific Gravity at 25 °C -

Appearance **White Crystalline Powder**

Log P (Measured) at 30 °C **5.09@25°C**

Flash Point °C **150 °C**

Vapour Pressure mmHG at 25.00 °C (est) **0.066 Pa@25°C**

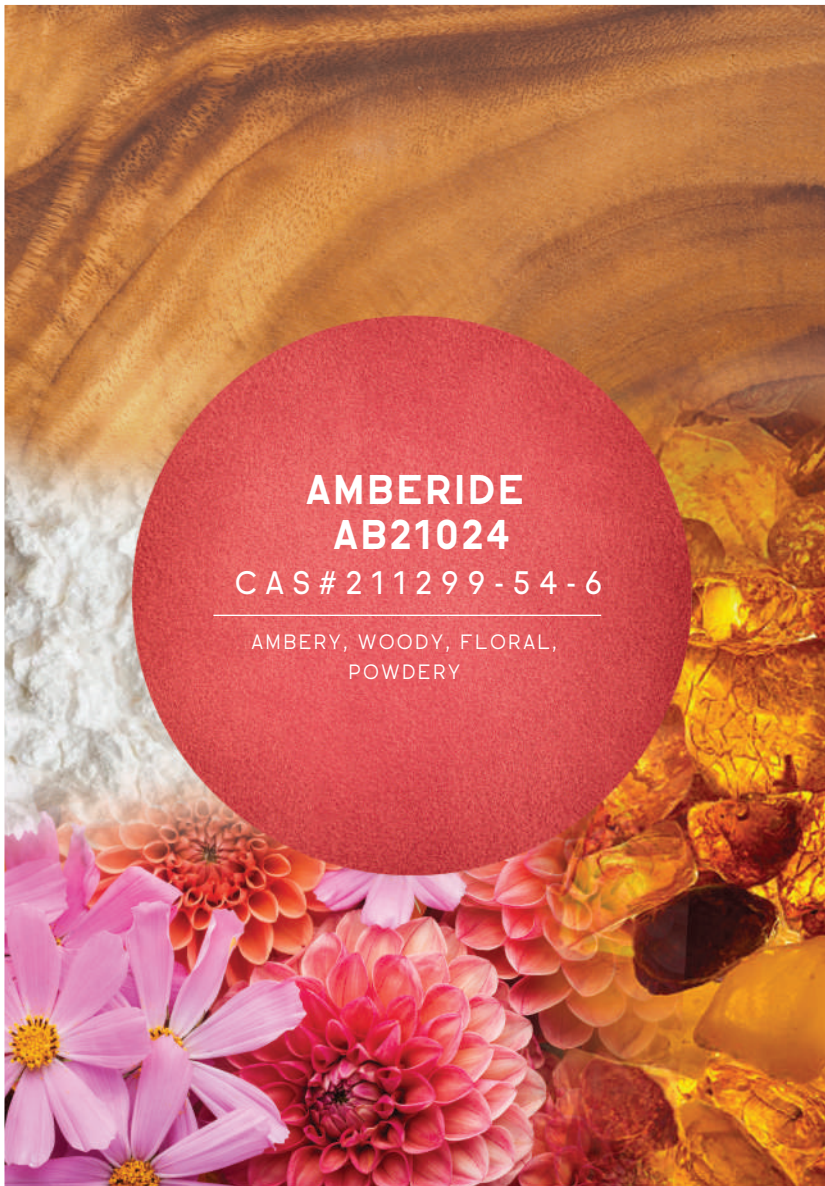
Melting Point °C **63.9 - 75.1 °C**

## SENSORY DESCRIPTION

Ambery, Woody, Creamy  
Animalic

## PERFUMERY USAGE

Perfuming Agents



**AMBERIDE  
AB21024**

CAS# 211299-54-6

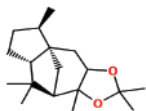
---

AMBERY, WOODY, FLORAL,  
POWDERY

# AMBERIDE AB21024

CAS#211299-54-6

Launch Date - April 2023



(4aR,5R,7aS,9R)-  
octahydro-2,2,5,8,8,9a-hexamethyl-4h-4a,  
9-methanoazuleno(5,6-d)-1,3-dioxole

## ODOUR FAMILY



Amber & Woody



**TENACITY**  
3 Months  
on blotter

*Amberide AB21024. A powerful long-lasting amber, woody (agarwood), odor profile. Highly diffusive.*

## PHYSICO-CHEMICAL PROPERTIES

Molecular Weight g/mol **278.43**

Refractive Index at 25 °C -

Specific Gravity at 25 °C -

Appearance **White Crystals**

Log P (Measured) at 30 °C **6 @ 25°C**

Flash Point °C **>100 °C**

Vapour Pressure  
mmHG at 25.00 °C (est) -

Melting Point °C **50-60 °C**

## SENSORY DESCRIPTION

Ambery, Woody, Floral,  
Powdery

## PERFUMERY USAGE

Perfuming Agents



**EVERMOSS  
AB20018**

CAS# 4707-47-5

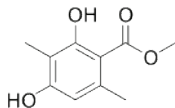
---

MOSSY, OAKMOSS, WOODY,  
PHENOLIC, EARTHY & SPICY

# EVERMOSS AB20018

CAS#4707-47-5

Launch Date - November 2023



methyl 2,4-dihydroxy-3,6-dimethylbenzoate

## ODOUR FAMILY



Mossy



## TENACITY

400 hour(s)  
at 10.00 % in  
dipropylene glycol

*Evermoss AB20018 is very useful for every apprentice Perfumer and beyond. Remember truly natural Oak Moss.*

## PHYSICO-CHEMICAL PROPERTIES

Molecular Weight g/mol **196.2**

Refractive Index at 25 °C -

Specific Gravity at 25 °C -

Appearance **White Crystalline  
Powder**

Log P (Measured) at 30 °C **2.6 @ 25°C**

Flash Point °C **182.78 °C**

Vapour Pressure  
mmHG at 25.00 °C (est) **0.002 Pa @ 24°C**

Melting Point °C **144.9 °C**

## SENSORY DESCRIPTION

Mossy, Oakmoss, Woody,  
Phenolic, Earthy & Spicy

## PERFUMERY USAGE

Perfuming Agents



# *Oriental Aromatics Ltd.*

Registered Office: 133, Jehangir Building, 2nd Floor,  
M.G. Road, Fort, Mumbai 400 001, India.  
T: +91-22-66556000 / 43214000F: +91-22-66556099  
E-mail: oa@orientalaromatics.com

[www.orientalaromatics.com](http://www.orientalaromatics.com)